



MX7580N
MX6580N

Digital Full Colour
Multifunction System

COLOUR IS EVERYTHING

Our colour document solutions range handles your daily document needs with finesse. Its user-friendly interface and advanced functions will transform the way you work. It's packed with carefully considered features to help organisations create, manage, and share beautiful documents. Whether as a central standalone machine or as part of a network, these models accelerate document workflow in any workplace.

A powerful document partner.



1. Saddle Stitch Finisher

Perfect for booklet making, this option automatically staples, punches holes*, and folds. With the addition of the optional Trimming Module, the edges of saddle-stitched documents can be trimmed to a beautifully consistent finish. Alternatively, you can choose a different optional finisher that supports commonly used finishing functions.

**Requires punch module option*



Saddle stitching



Sorting

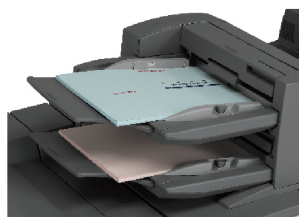
2. Folding Unit

This option performs five types of automated folding for efficient production of direct mail and other items.



3. Inserter

Thanks to two 200-sheet input trays that can handle different types of paper, the optional Inserter can add pre-printed covers and coloured pages to give documents a high-grade, professional look.



4. Curl Correction Unit

To ensure smooth paper transport, top and bottom rollers on this optional unit keep paper from warping.

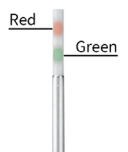
5. Duplex Single Pass Feeder

Because this highly reliable document feeder scans both sides of two-sided originals in one pass, large-volume documents can be scanned quickly and efficiently.



6. Status Indicator

The optional Status Indicator provides status alerts, including notice of errors, via green and red LED lights that can easily be seen from a distance.



7. 10.1-Inch Colour Touchscreen LCD

A user-friendly touchscreen interface incorporating a new Easy UI mode makes it easy and intuitive to operate the MFP.



8. QWERTY Keyboard

Adding the full-size retractable QWERTY keyboard option makes it easy to type in any needed information.



9. Multi Bypass Tray

This option can feed in up to 500 sheets.

10. Large Capacity Trays

Adding 5,000-sheet (2,500 x 2) Large Capacity Trays expands paper capacity for high-volume jobs. 3,000- and 3,500-sheet trays are also optionally available.



Better experiences and workflows for in-office users.

The MX-7580N/6580N can be customised to meet the needs of individual users, making operation simpler than ever. Such ease of use ensures that everyday jobs are done smoothly and quickly and that professional colour documents are created with ease. This is one MFP that's sure to boost your workplace efficiency.

Smarter processes for business owners and directors.

The MX-7580N/6580N is a central document hub designed for outstanding productivity and easy operation by every member of your team. This MFP can give your whole office a boost and help you to grab new business opportunities and expand your business.



Efficient administration for IT and office managers.

Simple, secure system administration is the bedrock of every successful business. As a system administrator, setting up a secure environment with the MX-7580N/6580N is easy. Not only does this provide peace of mind, it also enables your entire team to work more efficiently.

Say hello to higher
productivity.

Super-efficient colour and B/W output

The MX-7580N/6580N delivers a fast output of 75/65 ppm* in B/W and in full colour. The first copy comes out in just 3.7/4.0 seconds in B/W and 5.1/5.6 seconds in full colour, saving you valuable time when performing multiple short-run jobs.

*A4 (8 1/2" x 11"), long-edge feeding.

High-efficiency scanning

Each MX-7580N/6580N comes equipped with a highly efficient 150-sheet DSPF (duplex single pass feeder). This scans both pages of two-sided documents in one pass. With a scanning speed of up to 100 opm* (one-sided) or 200 opm* (two-sided), this MFP can finish even large projects quickly.

*Originals per minute; when feeding A4 (8 1/2" x 11") sheets

Intermediate Toner Hopper for Continuous Runs

Thanks to an intermediate toner hopper, there's no need to stop the MX-7580N/6580N during large-volume copy/print jobs when the toner cartridge needs changing. The MFP can use toner from the toner hopper to continue printing while the empty toner cartridge is replaced with a new one.



Versatile Paper Handling

• **Paper Weights:** The MX-7580N/6580N handles paper as thin as 55 g/m² and as thick as 300 g/m². Duplexing is possible for paper ranging from 60 g/m² to 300 g/m².

• **Paper Types:** In addition to plain paper, the MX-7580N/6580N accommodates a number of other paper types—including coated, textured, or embossed paper—as well as envelopes. This gives users the flexibility to fulfill diverse printing needs.

• **Paper Sizes:** These models supports an extensive range of standard paper sizes from A5 to SRA3/A3 wide (5 1/2" x 8 1/2" to 13" x 19"), along with custom paper sizes up to 330 x 488 mm (13" x 19.2"). Thanks to its printable area of 319 x 480 mm, this MFP enables full-bleed printing of an A3 image with crop marks or two A4 images with crop marks. It can also handle extra-long paper up to 1,300 mm*.

* Sharp recommends using the optional MX-LT10 for this function. Please contact a Sharp customer representative for details.

Office Direct Printing

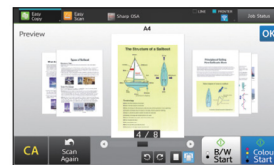
Print common Microsoft® Office files without using a PC. With a MX-7580N/6580N, you can print a Word, Excel®, or PowerPoint® file directly from a mobile device, cloud service, USB drive, or file server.

Note: The actual printout may look different from what is displayed on the computer screen. This function is enabled via DirectOffice™ technology.



10.1-Inch Colour LCD Touchscreen

A user-friendly touchscreen interface incorporating an Easy UI mode makes it easy for anyone to use the MFP's advanced functions. In this mode, simple function icons are displayed on the LCD touchscreen. Each user can customise the home screen by drag-and-dropping icons for commonly used functions, making for smoother, more efficient operation. The Advanced Preview function, meanwhile, lets you check document finishes and page layout in advance, edit pages easily, and preview documents in various modes.



Preview mode (3D)



Edit mode (rotate)

Direct Printing/Scanning with USB Drives

Insert a USB drive into the MFP and a print/scan command screen will automatically pop up on the LCD. Right away you can print files from the USB drive—which is displayed as thumbnails—or you can scan documents directly to the USB drive.



Integrated Device Management

As a system administrator, you can get the most out of a Sharp document system by using Sharp's efficiency-boosting device management tools. From a single location, you can use Sharp Remote Device Manager* (SRDM) to manage multiple Sharp MFPs.

* Contact a Sharp customer representative for availability and other details

Share information
easily and securely.

The Sharp Open Systems Architecture*

Innovative Sharp Open Systems Architecture (OSA) technology allows users to interact with critical business and network applications right from the LCD control panel, offering control and convenience. Because the Sharp OSA utilises industry-standard network protocols, these models will integrate with document management systems, resource planning software, workflow applications, and more. The OSA provides a foundation for cost reduction and information sharing across an organisation—effectively enhancing business efficiency.

** Requires optional MX-AMX2 and/or MX-AMX3.*

Link to Cloud services*

Connect to cloud services directly from the machine's control panel. Users can upload scanned data to Google Drive™, OneDrive® for Business or SharePoint® Online—or print directly from any of them. Using a cloud service like this can save businesses the time and cost of setting up and managing a server.

** Requires optional MX-AMX2.*



Link with mail servers

Scanned data can be conveniently sent via your regular Gmail™ or Microsoft Exchange account.



Two-way sharing with mobile devices

Connecting these models to one or more mobile devices is easy, and it expands options for sharing data. Not only can users send scanned documents to mobile devices such as smartphones and tablets, they can also print documents or photos sent from those devices.

Sharpdesk Mobile

Sharpdesk Mobile is a mobile print/scan application that connects the MFP to mobile devices. Link your mobile device to the MFP, by holding it over the NFC card reader*1 or by scanning the MFP's QR Code®.

**1: The NFC interface is for Android™ devices. Requires commercially available NFC card reader. Contact a Sharp customer representative for details.*

Mobile printing services

The MX6570N/7580N supports Google cloud print™, AirPrint and Sharp Print Service Plugin.

Sharpdesk document management software

Sharpdesk provides integrated desktop management of documents in over 200 file formats, including scanned paper-based documents and those created with popular applications, such as Word. It allows users to organise, edit, search and distribute documents, all with a simple drag-and-drop operation.

Wireless Connections*

Handy wireless access through two easy-to-use modes.

**requires optional MXEB18*

Infrastructure mode

Wirelessly connects the system to mobile PCs/devices via a commercially available wireless LAN router.

Access point mode

Wirelessly connects a LAN-wired machine to mobile PCs/devices without going through a wireless LAN router.

Note: External networks cannot be accessed via the machine. Up to five mobile devices can be wirelessly connected to the machine at the same time.

Easy sharing of application files

This model's hard disk enables files created with applications such as Word and Excel to be saved in their original file format and shared across the office network.

Note: Sharp recommends backing up data saved to the MFP's hard disk.

Document filing

Document Filing allows processed data to be saved in designated folders on the MFP's hard disk. From there, it can be instantly recalled for printing and sending at a later time.

Multi-layered security



Document protection

Unauthorised access to confidential documents is restricted by embedding copy-prevention data in them.

Note: Requires optional data security kit. May not work with certain types of paper, documents such as those with a large volume of photos, or machine settings.

Data protection

Job data is automatically encrypted before being saved to internal storage. Once a job is finished, its encrypted data is erased by up to 10 automatic overwrites. Retained data can be erased when it's time to replace the machine, preventing the leak of confidential information.

Note: Contact a Sharp customer representative for details on activating this function.

Network security and access control

- S/MIME provides secure e-mail communications when e-mailing scanned data.
** Only when e-mailing scanned data.*
- Secure sockets layer and IPsec data encryption technologies ensure secure network communications.
- User Authentication prevents unauthorised machine use by requiring access passwords.

Free-Tilting Control Panel

The control panel can be tilted freely at various angles for easy viewing and easy operation, even from a wheelchair.



Integrated Device Management

As a system administrator, you can get the most out of a Sharp document system by using Sharp's efficiency-boosting device management tools. From a single location, you can use Sharp Remote Device Manager* (SRDM) to manage multiple Sharp MFPs.

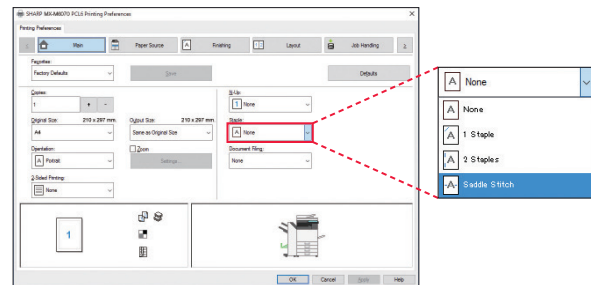
* Contact a Sharp customer representative for availability and other details.

Direct printing/scanning with USB drives

Insert a USB drive into the machine and a print/scan command screen will automatically pop up on the LCD. Users can print files from the USB drive—which are displayed as thumbnails—or they can scan documents directly to the USB drive.

Printer driver with easy setup

The printer driver setup window features a simple design that includes larger buttons and drop-down menus, making it easier to use printer functions.

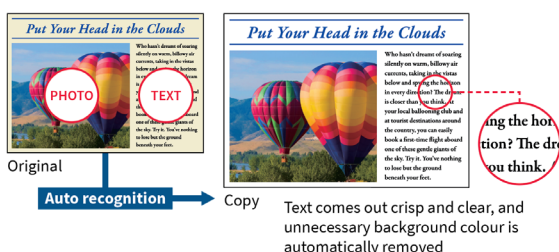


High-quality, every time.

Easy, High-Quality Copying and Scanning

Through an advanced three-step process, **Auto Colour Mode** provides fully automated copying and scanning in both colour and B/W—with a simple press of the Start button. Here's how it works: **Auto Colour Selection** automatically determines whether a page is colour or B/W. **Auto Original Type Selection** then analyses page contents to distinguish between different components (such as photos and text) and selects the appropriate mode. Finally, **Background Suppression** automatically removes unnecessary background colour.

Auto Colour Mode



High-Resolution Output

The MFP's print engine supports 1,200 × 1,200 dpi printing and copying*. Digital smoothing technology delivers print and copy resolution at the equivalent of 9,600 × 600 dpi, giving you ultra-clear image quality. Fine lines and small text come out looking crisper and easier to read.

* Copying in B/W only.

True Adobe® PostScript® 3™

For better graphics handling, the MX-7580N/6580N comes standard with true Adobe PostScript 3. In addition, the PostScript driver allows you to use the dot screening technique so that you can emulate the high-quality printing of commercial offset printers.

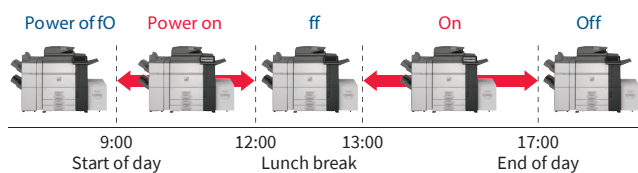
Environment friendly.

Auto Power Shut-Off Mode

Based on prior usage patterns, the MFP automatically determines how long to wait before going into auto power shut-off mode. Shortly before this mode begins, a message appears on the LCD indicating that the MFP will soon shut down and give you the option to continue operation.

Power ON/OFF Scheduling

This function automatically turns the MX-7580N/6580N on or off according to time schedules set by the administrator.



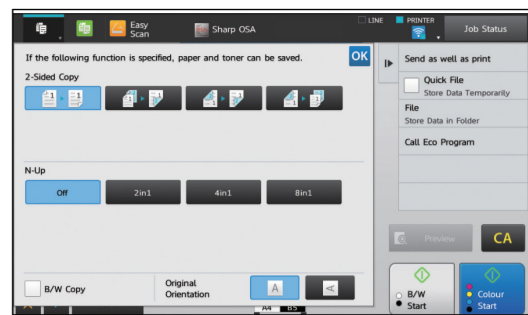
Eco scan

The Eco Scan function saves energy by keeping the fusing system shut down during jobs that don't require its use—for example, during image sending and Document Filing.

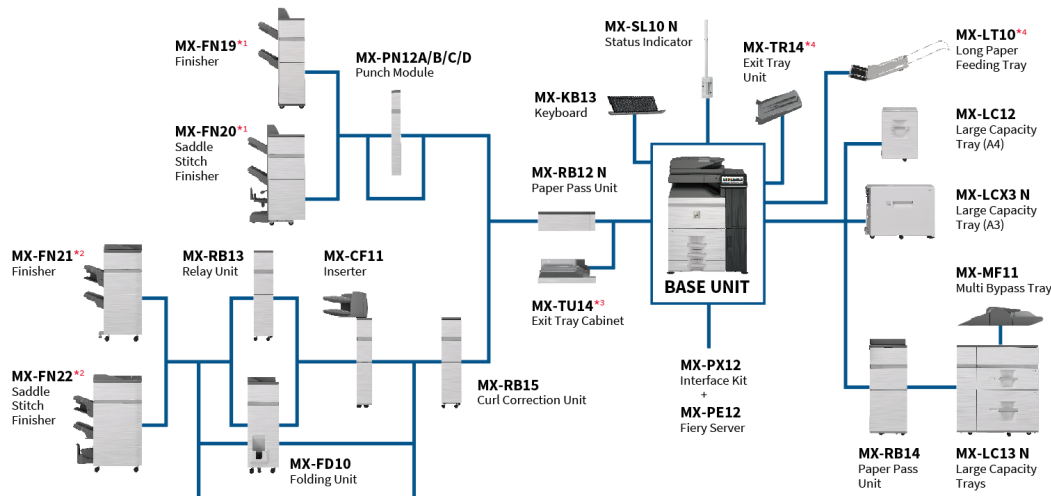
Eco Recommendation

This function suggests environmental friendly settings before a print*/copy command is executed from the control panel.

*For printing Document Filing data and direct printing (FTP/SMB/USB).



System configuration.



- MX-PN13A/B/C/D
Punch Module (for MX-FN21/FN22)
- MX-TM10
Trimming Module (for MX-FN22)
- MX-PF10
Barcode Font Kit
- AR-SU1
Stamp Unit
- MX-FX15
Fax Expansion Kit
- MX-FW11
Internet Fax Expansion Kit
- MX-USX1/X5
Sharpdesk 1/5-License Kit
- MX-US10/50/A0
Sharpdesk 10/50/100-License Kit
- MX-AM1
Application Integration Module
- MX-AMX2
Application Communication Module
- MX-AMX3
External Account Module
- MX-FR55U
Data Security Kit

*1: 50-sheet stapling; 80 g/m² A4 paper

*2: 100-sheet stapling; 80 g/m² A4 paper

*3: Minimum required equipment

*4: Cannot be used with MX-RB14, MX-LC13 N, and MX-MF11

Specifications.

MX-FN19 Finisher

Paper size	Non offset	SRA3/A3 wide (13" x 19") to A5 (5 1/2" x 8 1/2")*1 Custom sizes up to 330 x 488 mm (13" x 19.2")
	Offset/staple	A3 (11" x 17") to B5*2 (8 1/2" x 11")
Paper weight	Non offset	55g/m ² to 300g/m ² (13lbs bond to 110lbs cover)
	Offset/staple	55g/m ² to 256g/m ² (13lbs bond to 140lbs index)
Paper capacity	Upper tray	1,550 sheets (up to A4), 650 sheets (up to SRA3)
(80 g/m ²)	Lower tray	2,450 sheets (up to A4), 650 sheets (up to SRA3)
Stapling capacity ³		50 sheets (A4, B5), 30 sheets (A3, B4, A4*)
Staple position		3 locations (front, rear, 2 staples)
Power requirements		Supplied by main unit
Dimension	With tray stored	530 x 662 x 1,100 mm (W x D x H)
	With tray extended	660 x 662 x 1,100 mm (W x D x H)
Weight (approx.)		42 kg

MX-FN20 Saddle Stitch Finisher

Paper size	Non offset	SRA3/A3 wide (13" x 19") to A5 (5 1/2" x 8 1/2")*1 Custom sizes up to 330 x 488 mm (13" x 19.2")
	Offset/staple	A3 (11" x 17") to B5*2 (8 1/2" x 11")
Power weight	Non offset	55g/m ² to 300g/m ² (13lbs bond to 110lbs cover)
	offset/staple	55g/m ² to 256g/m ² (13lbs bond to 140lbs index)
	saddle stitch	55 g/m ² to 105 g/m ² (13 lbs bond to 28 lbs bond)
	folding	60 g/m ² to 105 g/m ² (16 lbs bond to 28 lbs bond)
Paper capacity	Upper tray	1,550 sheets (up to A4), 650 sheets (up to SRA3)
(80 g/m ²)	Lower tray	2,450 sheets (up to A4), 650 sheets (up to SRA3)
	Saddle stitch tray	1–5 sheets: 25 sets, 6–10 sheets: 15 sets, 11–15 sheets: 10 sets
Stapling capacity ³		50 sheets (A4, B5), 30 sheets (A3, B4, A4*)
Staple position		3 locations (front, rear, 2 staples)
Power requirements		Supplied by main unit
Dimensions	With tray stored	642 x 662 x 1,100 mm (W x D x H)
	With tray extended	772 x 662 x 1,100 mm (W x D x H)
Weight (approx.)		72 kg

MX-FN21 Finisher

Paper size	Non offset	SRA3/A3 wide (13" x 19") to A5 (5 1/2" x 8 1/2")*1 Custom sizes up to 330 x 488 mm (13" x 19.2")
	Offset/staple	A3 (11" x 17") to B5*2(8 1/2" x 11")
Paper weight	No offset/offset	55 g/m ² to 300 g/m ² (13 lbs bond to 110 lbs cover)
	Staple/saddle stitch	60 g/m ² to 300 g/m ² (16 lbs bond to 110 lbs cover)
	Folding	60 g/m ² to 220 g/m ² (16 lbs bond to 80 lbs cover)
Paper capacity	Upper tray	1,500 sheets (up to A4), 750 sheets (up to SRA3)
(80 g/m ²)	Middle tray	250 sheets (up to A4), 125 sheets (up to SRA3)
	Lower tray	2,500 sheets (up to A4), 750 sheets (up to SRA3)
Stapling capacity*3		100 sheets (A4, B5),50 sheets (A3, B4, A4*)
Staple position		3 locations (front, rear, 2 staples)
Power consumption (max.)		200 W, 350 W with MX-FD10
Power requirements		230V, 10A
Dimensions	With tray stored	654 x 765 x 1,040 mm (W x D x H)
	With tray extended	782 x 765 x 1,040 mm (W x D x H)
Weight (approx.)		61 kg

MX-FN22 Saddle Stitch Finisher

Paper size	Non offset	SRA3/A3 wide (13" x 19") to A5 (5 1/2" x 8 1/2")*1 Custom sizes up to 330 x 488 mm (13" x 19.2")
	Offset/staple	A3 (11" x 17") to B5*2(8 1/2" x 11")
Paper weight	Non offset/offset	55 g/m ² to 300 g/m ² (13 lbs bond to 110 lbs cover)
	Staple/saddle stitch	60 g/m ² to 300 g/m ² (16 lbs bond to 110 lbs cover)
	Folding*5	60 g/m ² to 220 g/m ² (16 lbs bond to 80 lbs cover)
Paper capacity	Upper tray	1,500 sheets (up to A4), 750 sheets (up to SRA3)
	Middle tray	250 sheets (up to A4), 125 sheets (up to SRA3)
	Lower tray	2,500 sheets (up to A4), 750 sheets (up to SRA3)
	Saddle stitch tray	1–5 sheets: 25 sets, 6–10 sheets: 15 sets, 11–15 sheets: 10 sets, 16–20 sheets: 5 sets
Stapling capacity *3		100 sheets (A4, B5), 50 sheets (A3, B4, A4*)
Staple position		3 locations (front, rear, 2 staples)
Power consumption (max.)		200 W, 350 W with MX-FD10
Power requirements		230V, 10A
Dimensions	With tray stored	767 x 765 x 1,040 mm (W x D x H)
	With tray extended	896 x 765 x 1,040 mm (W x D x H)
Weight (approx.)		108 kg

MX-TM10 Trimming Module (for MX-FN22)

Paper size	SRA3/A3 wide (13"x 19") to A4 (8 1/2" x 11")*4 Custom sizes up to 330 x 488 mm (13" x 19.2")
Paper weight	60 g/m ² to 300 g/m ² (16 lbs bond to 110 lbs cover)
Acceptable number of sheets *5	2–20sheets(60g/m ² to 81.4g/m ²), 2–10sheets(more than 81.4 g/m ² to 105g/m ²), 2–3sheets(more than 105g/m ² to 220g/m ²)
Trim width	2 mm to 20 mm in 0.1 mm increments
Power requirements	Powered by MX-FN22 Finisher
Dimensions	251 x 625 x 403 mm (W x D x H)
Weight (approx.)	32 kg

Punch modules

For MX-FN19/20:	MX-PN12A	MX-PN12B	MX-PN12C	MX-PN12D
For MX-FN21/22:	MX-PN13A	MX-PN13B	MX-PN13C	MX-PN13D
Number of holes:	2	3/2	4/2	4(wide)
Paper weight	55 to 256 g/m ²			
Power requirements	Powered by MX-FN19/FN20/FN21/FN22 Finisher			

MX-FD10 Folding Unit

Folding mode	Z-fold, C-fold, Accordion-fold, Double-fold, Half-fold
Paper size	Z-/half fold *6 A3 (11" x 17") to A4 (8 1/2" x 11")*4 C-/accordion-/Double A4 (8 1/2" x 11")*4 fold
Paper capacity	Z-/half fold*6 30 sheets (up to A3), 10 sheets(A4*) C-/accordion-fold 40 sheets (A4) Double -fold 25 sheets (A4)
Paper weight	55 g/m ² to 105 g/m ² (13 lbs bond to 28 lbs bond)
Power requirements	Powered by MX-FN21/FN22 Finisher
Dimensions	336 x 793 x 1,050 mm (W x D x H)
Weight (approx.)	66 kg

MX-RB15 Curl Correction Unit

Paper size	SRA3/A3 wide (13" x 19") to A5 (5 1/2" x 8 1/2")*1 Custom sizes up to 330 x 488 mm (13" x 19.2")
Paper weight	55 g/m ² to 300 g/m ² (13 lbs bond to 110 lbs cover)
Power requirements	Supplied by main unit
Dimensions	214 x 760 x 986 mm (W x D x H)
Weight (approx.)	18.4 kg

MX-CF11 Inserter

Paper size	SRA3/A3 wide (13" x 19") to A5 (5 1/2" x 8 1/2")*1 Custom sizes up to 330 x 488 mm (13" x 19.2")
Paper weight	60 g/m ² to 220 g/m ² (16 lbs bond to 80 lbs cover)
Power capacity (80g/m ²) upper/lower tray	200 sheets/each
Power requirements	Supplied by main unit
Dimensions	With tray stored 540 x 760 x 1,276 mm (W x D x H) With tray extended 690 x 760 x 1,276 mm (W x D x H)
Weight (approx.)	45 kg

MX-LC12 Large Capacity Tray (A4)

Paper size	A4, B5 (8 1/2" x 11")*7
Paper weight	60 g/m ² to 220 g/m ² (16 lbs bond to 80 lbs cover)
Power capacity (80g/m ²)	3,500 sheets
Power requirements	Supplied by main unit
Dimensions	376 x 576 x 524 mm (W x D x H)
Weight (approx.)	28.5 kg

MX-LCX3 N Large Capacity Tray (A3)

Paper size	SRA3/A3 wide (13" x 19") to B5*2 (8 1/2" x 11")
Paper weight	60 g/m ² to 220 g/m ² (16 lbs bond to 80 lbs cover)
Power capacity (80g/m ²)	3,000 sheets
Power requirements	Supplied by main unit
Dimensions	670 x 570 x 525 mm (W x D x H)
Weight (approx.)	50 kg

MX-MF11 Multi Bypass Tray (for MX-LC13 N)

Paper size	SRA3/A3 wide (13" x 19") to A5 (5 1/2" x 8 1/2")*1 Custom sizes up to 330 x 488 mm (13" x 19.2")
Paper weight	55 g/m ² to 220 g/m ² (13 lbs bond to 80 lbs cover)
Power capacity (80g/m ²)	500 sheets
Power requirements	Powered by MX-LC13 N Large Capacity Trays
Dimensions	With tray stored 705 x 556 x 203 mm (W x D x H) With tray extended 878 x 556 x 203 mm (W x D x H)
Weight (approx.)	18 kg

MX-LC13 N Large Capacity Trays

Paper size	SRA3/A3 wide (13" x 19") to B5 (7 1/4" x 10 1/2")*8 Custom sizes up to 330 x 488 mm (13" x 19.2")
Paper weight	55 g/m ² to 300 g/m ² (13 lbs bond to 110 lbs cover)
Power capacity (80g/m ²) upper/lower tray	2,500 sheets/each
Power consumption(max.)	900 W
Power requirements	230V, 10A
Dimensions	895 x 763 x 986 mm (W x D x H)
Weight (approx.)	131 kg

MX-LT10 Long Paper Feeding Tray

Paper size	Width 90 mm to 305 mm Length 489 mm to 1,300 mm
Paper capacity	1 sheet
Dimensions	With tray stored 338 x 195 x 107 mm (W x D x H) With tray extended 581 x 195 x 103 mm (W x D x H)
Weight (approx.)	0.8 kg

*1 Only short-edge feeding can be used with A5 (5 1/2" x 8 1/2") paper. *2 Only long-edge feeding can be used with B5 paper. *3 Using 80 g/m² paper, can include back and front covers (total of 2 sheets) of heaviest paper that can be stapled. *4 Only short-edge feeding can be used with A4 (8 1/2" x 11") paper. *5 Can include a single cover sheet of 300 g/m² or less. *6 Z-fold and half-fold pages are ejected from the finisher (MX-FN21/FN22). *7 Only long-edge feeding can be used with A4 and B5 (8 1/2" x 11") paper. *8 Only short-edge feeding can be used with 7 1/4" x 10 1/2" paper.

General

Type	Console
Engine speed	A4 (8 1/2" x 11")*1: Max. 75/65 ppm A3 (11" x 17"): Max. 36/33 ppm SRA3: Max. 35/31 ppm
Control panel display	10.1-inch colour LCD touchscreen
Paper size	Max. SRA3/A3 wide (13" x 19"), min. A5 (5 1/2" x 8 1/2")*2
Paper capacity (80 g/m ²)	Standard: 3,100 sheets (1,200-sheet tray, 800-sheet tray, 500-sheet tray x 2, and 100-sheet multi bypass tray) Maximum: 8,500 sheets (3,000 sheets & optional 2 x 2,500-sheet tray and 500-sheet multi bypass tray)
Paper weight	Tray 1&2: 60 g/m ² to 105 g/m ² (16 lbs bond to 28 lbs bond) Tray 3&4: 60 g/m ² to 220 g/m ² (16 lbs bond to 80 lbs cover) Multi bypass tray: 55 g/m ² to 300 g/m ² (13 lbs bond to 110 lbs cover) Multi bypass tray (MX-MF11): 55 g/m ² to 220 g/m ² (13 lbs bond to 80 lbs cover) Large capacity tray(MX-LC12,MX-LCX3 N): 60 g/m ² to 220 g/m ² (16 lbs bond to 80 lbs cover) Large capacity tray (MX-LC13 N): 55 g/m ² to 300 g/m ² (13 lbs bond to 110 lbs cover)
Warm-up time ³	55 sec
Memory	6GB (copy/print shared) 1TB HDD*4
Power requirements	220 V to 240 V, 8 A, 50/60 Hz (10 A plug x 2)
Power consumption	Max. 3.84 kW (220 V to 240 V)
Dimensions (W x D x H) ⁵	845 x 844 x 1,221 mm (33 9/32" x 33 15/64" x 48 5/64")
Weight (approx.)	211 kg (465.2 lbs)

Copier

Original paper size	Max. A3 (11" x 17")
First copy time ⁶	Full colour: 5.1/5.6 sec. B/W: 3.7/4.0 sec.Continuous copy Max. 9,999 copies
Resolution scan (colour):	600 x 600 dpi
Resolution scan (B/W):	600 x 600 dpi, 600 x 400 dpi
Resolution print (colour):	600 x 600 dpi, 9,600 (equivalent) x 600 dpi (depending on copy mode)
Resolution print (B/W):	1,200 x 1,200 dpi, 600 x 600 dpi, 9,600 (equivalent) x 600 dpi (depending on copy mode)
Gradation	Equivalent to 256 levels
Zoom range	25% to 400%(25% to 200% using DSPF)in 1% increments
Pre-set copy ratios	Metric: 10 ratios (5R/5E), inch: 8 ratios (4R/4E)

Network Scanner

Scan method	Push scan (via control panel) Pull scan (TWAIN-compliant application)
Scan speed ⁷	One-sided: Max. 100 originals/min. Two-sided: Max. 200 originals/min.
Resolution	Push scan: 100, 150, 200, 300, 400, 600 dpi Pull scan: 75, 100, 150, 200, 300, 400, 600 dpi 50 dpi to 9,600 dpi via user setting*8
File formats	TIFF, PDF, PDF/A, encrypted PDF, XPS, compact PDF*9, JPEG*9, searchable PDF, OOXML (pptx, xlsx, docx), text (TXT [UTF-8]), rich text (RTF)
Scanner utility	SharpDesk
Scan destinations	Scan to e-mail/desktop/FTP server/ network folder (SMB)/USB drive/HDD

Document filing

Document filing capacity ¹⁰	Main and custom folders: 35,000 pages or 5,000 files Quick file folder:10,000 pages or 1,000 files
Stored jobs*11	Copy, print, scan, fax
Storage folders	Quick file folder, main folder, custom folder (max. 1,000 folders)

Network printer

Resolution	1,200 x 1,200 dpi, 600 x 600 dpi, 9,600 (equivalent) x 600 dpi
Interface	USB 2.0 (host, high-speed), 10Base-T/100Base-TX/1000Base-T
Supported OS	Windows Server® 2008, Windows Server® 2008 R2, Windows Server® 2012, Windows Server® 2012 R2, Windows Server® 2016,

Windows Vista®, Windows® 7, Windows® 8.1, Windows® 10, Mac OS 10.6, 10.7, 10.8, 10.9, 10.10, 10.11, 10.12, 10.13, Mac OS Sierra
TCP/IP
LPR, Raw TCP (port 9100), POP3 (e-mail printing), HTTP, FTP for downloading print files, IPP, SMB, WSD
PCL 6 emulation, Adobe® PostScript® 3™
80 fonts for PCL, 139 fonts for Adobe PostScript 3

Network protocols
Printing protocols

PDL
Available fonts

Fiery® Print Server (optional MX-PE12 and MX-PX12 required)

Type	Embedded server
System software	Fiery FS200 Pro
Operating System	Linux
CPU	Intel® Pentium® G1820, 2.7 GHz
Memory	2GB RAM 500GB HDD
Resolution	1,200 x 1,200 dpi, 600 x 600 dpi (PS, PCL)
Supported OS	Windows Server 2008, Windows Server 2008 R2, Windows Server 2012, Windows Server 2012 R2, Windows Server 2016, Windows 7, Windows 8.1, Windows 10, Mac OS 10.7, 10.8, 10.9, 10.10, 10.11, 10.12, 10.13, Mac OS Sierra
Network Protocols	TCP/IP, LDAP, iPrint thru LPR
Interface	Gigabit Ethernet
Printing protocols	LPD, PAP, SMB, port 9100, IPP 1.1, FTP printing, e-mail print, WSD
PDL	Adobe PostScript 3
Available fonts	138 fonts for Adobe PostScript 3
Power requirements	100 V to 240 V, 50/60 HZ
Power consumption	Max. 0.18 kW
Dimension (W x D x H)	271.5 x 296.9 x 89.4 mm (10 45/64" x 11 45/64" x 3 17/32")
Weight (approx.)	5.6 kg (12.3 lbs)

B/W Facsimile (optional MX-FX15 required)

Compression method	MH/MR/MMR/JBIG
Communication protocol	Super G3/G3
Transmission time	Less than 3 seconds ¹²
Modem speed	33,600 bps to 2,400 bps with automatic fallback
Transmission resolution	From Standard (203.2 x 97.8 dpi) to Ultra Fine (406.4 x 391 dpi)
Recording size	A3 to A5 (11" x 17" to 5 1/2" x 8 1/2")
Memory	1GB (built-in)
Greyscale levels	Equivalent to 256 levels

*1: Long-edge feeding. *2: Only short-edge feeding can be used with A5 (5 1/2" x 8 1/2") paper. *3: At rated voltage, 23°C (73.4°F). May vary depending on operating conditions and environment. *4: HDD capacity depends on procurement and sourcing status. *5: Including adjusters and protuberances. *6: Long-edge feeding of A4 (8 1/2" x 11") sheets from 2nd paper tray, using document glass, without Auto Colour Selection and Auto Colour mode, MFP in fully ready condition. May vary depending on operating conditions and environment. *7: Based on Sharp's A4 standard chart, using document feeder and long-edge feeding. Using factory default settings with Auto Colour Selection off. Scan speed will vary depending on the type of document and the scan settings. *8: Resolution will vary depending on the size of the scanned area. *9: Colour/greyscale only. *10: Storage capacity will vary depending on the type of document and the scan settings. *11: Some features require option(s). *12: Based on Sharp's standard chart with approx. 700 characters (A4 or 8 1/2" x 11" long-edge feeding) at standard resolution in Super G3 mode, 33,600 bps, JBIG compression.



SHARP

Be Original.

