

SHARP

Be Original.

BP-B547WD
BP-B537WR

Digital Multifunctional System

So smart, so compact, so easy to place



smart business partner

A versatile MFP that's built for the future of work



Small/midsize offices



Enterprises

CONNECTED

Interacting with others to get the job done regardless of time or space—that's the key to maximum value.

The world of work is changing—whether it’s in a remote office, a coworking space, or a larger enterprise setting. As workplaces evolve, every growing business needs equipment that can keep up with the times. Here’s one MFP that offers a compelling solution. Integrating seamlessly with A3 machines, this MFP is at home in virtually any office, large or small. Rest assured, it’s designed with security, reliability, and high functionality in mind. This versatile MFP could be your key to unlocking new business growth and opportunities.



Executive rooms

SECURE

Information is one of business’s greatest assets and needs to be safeguarded with the utmost security—that’s the key propelling business.



Shared offices/coworking spaces

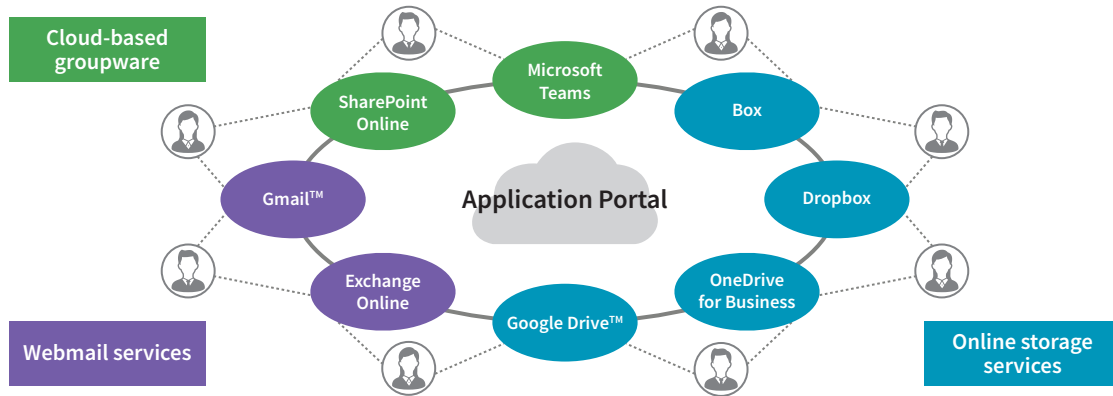
SMART

Leveraging the latest technology can help you get everyday tasks done with ease and efficiency—that’s the key to business success.

CONNECTED

LINK TO CLOUD SERVICES

Make sure you and your co-workers can access each other's digital and hard-copy information so you can maximise all-important teamwork and creative collaboration. Use the MFP to swiftly scan documents and upload them to cloud services for sharing with your team. View, edit, and print documents regardless of whether you're inside or outside the office. Now's the time for smart information sharing, with a Sharp MFP.



Application Portal* You can download and install apps on your MFP via Sharp's Application Portal. App updates are easily recognisable, so you'll always be up-to-date on the latest services.

*Contact a Sharp customer representative for details.

Single Sign-on* Once you log in to the MFP, its single sign-on feature allows you to quickly access multiple software services without having to sign in to each one separately.

*User authentication must be activated. Contact a Sharp customer representative for details.

Link with Mail Servers Scanned data can be conveniently sent via your regular Gmail™ or Microsoft Exchange/Online account.

Sharp OSA (Open Systems Architecture) Linking MFP functions with third-party applications automates entire tasks, covering everything from input and processing to output, and boosting work efficiency.

LINK WITH MOBILE DEVICES

Companies are helping usher in diversified work styles for their employees, and mobile devices like tablets and smartphones are an indispensable part of this new way of doing business. Swiftly linking MFPs with mobile devices streamlines complex, time-consuming workflows and gives easy access to data on devices. Now's the time to streamline tasks and create further value.

Wireless LAN Connection The MFP connects wirelessly with PCs, smartphones, and tablets. It works with the 5 GHz band. This ensures minimal radio interference and stable high-speed communications. It also supports the WPA3™ (Wi-Fi Protected Access 3) security protocol featuring improved encryption.

Wi-Fi Direct®* Personal mobile devices belonging to office visitors or staff can connect to the MFP one-on-one without going through the company LAN or access point.

*Wi-Fi Direct is for Android™ devices.

Wi-Fi Protected Setup™ This makes it easy to connect the MFP to a secure wireless LAN without having to enter an SSID and security key.

Universal Print from Microsoft The MFP supports this cloud-based print service. You can print via the cloud without the need for a print driver.

Sharp Print Service Plugin This mobile printing technology allows printing from Android devices.

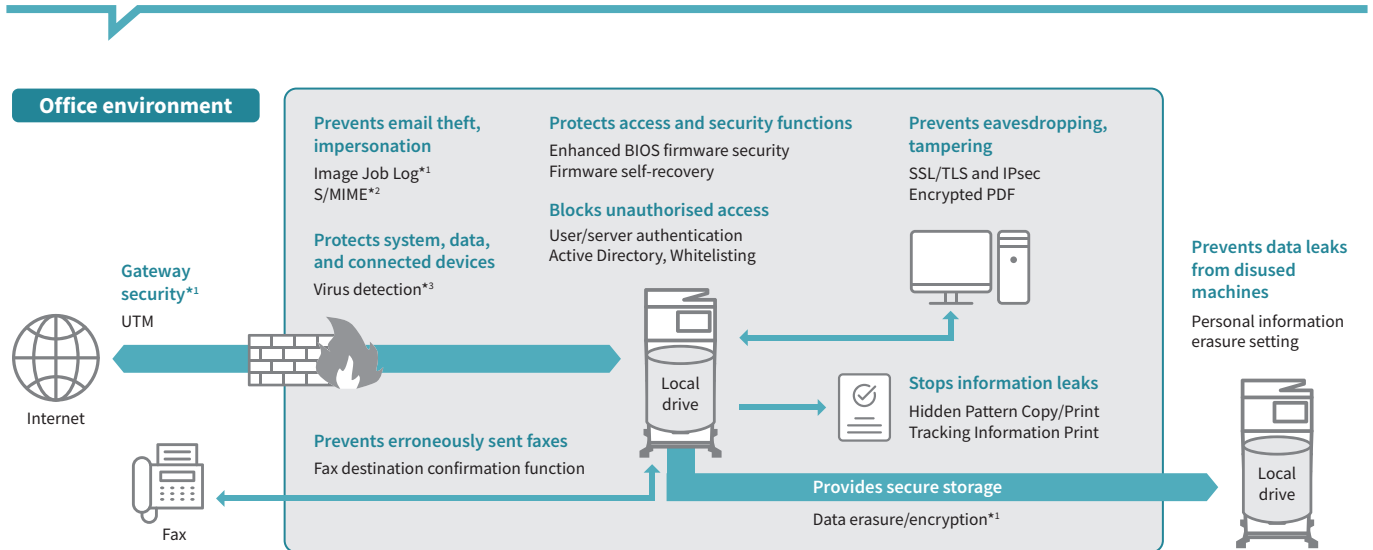
Chrome OS™ The MFP can print directly from Chromebook™ laptops.

AirPrint The MFP supports the AirPrint printing feature in Apple devices. It lets you print directly from a mobile device without the need for a print driver.

SECURE

SEAMLESS SECURITY

With advancements in information technology come threats such as computer viruses, information leaks, and unauthorised access. Dealing with these wide-ranging threats is one of the most pressing issues for business today—which is why MFPs should be treated the same as other IT equipment. Sharp MFPs reduce all sorts of security risks by, for example, blocking unauthorised access and preventing information leaks from printouts or storage media. Now's the time to build a safer and more secure business environment with a Sharp MFP.



*1: Contact a Sharp customer representative for details. *2: Only when emailing scanned data. *3: Requires optional BP-VD10.

BIOS Firmware Security When booting up, the MFP checks for any anomalies in the BIOS firmware. If it finds a problem, it aborts the startup. If there are other firmware-related issues, the MFP will attempt recovery to protect the system.

Virus Detection* Using the Bitdefender scan engine, the MFP defends against virus attacks on itself and connected devices. It scans for viruses and prevents the MFP from transmitting them to other devices like laptops and PCs.

*Requires optional BP-VD10.

Server Authentication The MFP supports external server authentication functions such as LDAP and Active Directory. With centralised management of multiple user credentials, system administrators can keep track of multiple MFP usage.

Active Directory By linking the MFP with Active Directory, users can access cloud services and network folders via the MFP by logging in with their authentication information. Beside the convenience of this single sign-on for users, system administrators can maintain a high level of security.

S/MIME* The MFP supports email encryption and digital signature. Sending emails in encrypted format keeps data from leaking. It also prevents someone from masquerading as the sender or altering the content of an email.

*Only when emailing scanned data.

Whitelisting This function protects the MFP from fraudulent programs trying to access the file system and obtain information.

Image Job Log* This function creates and externally stores an image file (PDF) and a log file (XML) for each job. This helps identify unauthorised use of the MFP.

*Contact a Sharp customer representative for details on activating this function.

Data Encryption and Automatic Erasure* Job data is encrypted before being saved to the MFP's internal storage. Once the data is output or sent, it is automatically erased.

*Contact a Sharp customer representative for details on activating this function.

Document Control This function prevents unauthorised use of confidential documents* by embedding copy prevention data in them.

*Requires optional BP-FR12U. May not work with certain types of paper, documents (such as those with a lot of photos), or MFP settings.

Personal Information Erasure Retained personal information and other data can be erased when it's time to replace the MFP, preventing the leakage of confidential information.

Remote Firmware Updates The MFP's firmware can be remotely updated—without the need for service operation—via a firmware update service, so you're always using the latest system for your MFP.

SMART

STREAMLINE DAILY OFFICE TASKS

When you're on the go and away from your usual desk, there are only so many paper documents you can keep on hand. To solve this problem, use an MFP to scan paper-based documents into digitised form. That way, they're easy to share with others working remotely. The MFP also lets you use text from paper documents as digital data. Now's the time to improve efficiency by embracing new ways of working.

Duplex Single Pass Feeder* The DSPF scans both pages of two-sided documents in one pass—in batches of up to 100 sheets. With scanning speeds of up to 130 opm (originals per minute; two-sided), the MFP is quick to finish even large jobs.

*Available on BP-B547WD.

Multicrop and Image Crop Functions Multiple receipts, photos, and other items can be scanned all at once, with each one saved as a separate file. This helps you streamline the filing of receipts and bills. The MFP can also crop photos from documents such as magazine pages and save them as individual files.

Optical Character Recognition OCR capability on this MFP lets you convert a scanned document into a searchable PDF file or into an editable Office Open XML (pptx, xlsx, docx) file.

Business Card Management A dedicated business card feeder easily scans batches of up to 25 cards*. The MFP reads the contact details on each card via OCR and then exports these to your chosen contact management system.

*Scans one side only, even when using the document feeder.

Office Direct Printing* Print common Microsoft Office files without using a PC. With this MFP, you can print a Word, Excel, or PowerPoint file directly from a mobile device, cloud service, USB drive, or file server.

*The actual printout may look different from what is displayed on the computer screen. This function is enabled via Qualcomm® DirectOffice™ technology.

Space-Efficient Inner Finisher With the help of this finisher option, the MFP can handle document sorting and stapling jobs with ease.

Easy Scanning Tap on the LCD touchscreen's Auto Set button to have the MFP perform a host of actions automatically. It can skip blank pages in a multi-page document or reorient pages mixed in upside down. The MFP also uses AI and image processing technology to automatically determine the optimal resolution, gradation, and compression rate for your scan jobs.

■ **Irregular Size Detection** When using the automatic document feeder to scan, the MFP will automatically crop irregular-size documents to the optimal size.

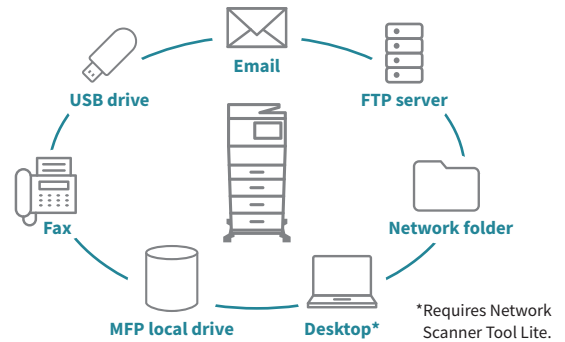
■ **Business Card Scanning** Documents that the document feeder determines to be business card size are saved as separate files.



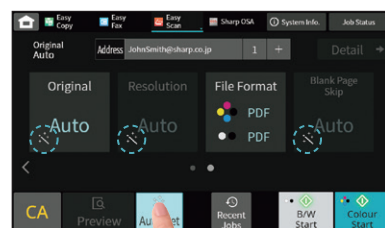
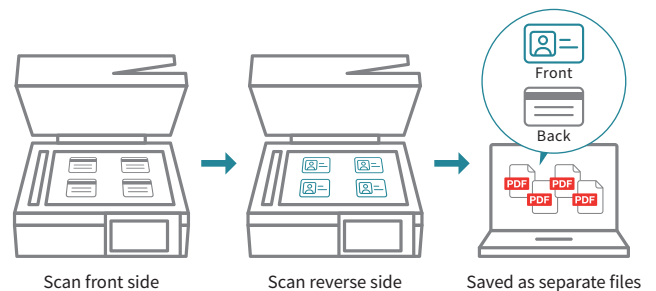
■ **Few-Colour Scanning** Ideal for originals that contain no photos, the MFP reduces file size while maintaining document image quality.

■ **Corrects Skewed Documents** The MFP detects skewed documents and automatically adjusts them, so you don't have to re-scan them. This feature works for PDF and other file formats.

Scan Destinations Scanned documents can be distributed in a number of ways, depending on the purpose, workflow, or network environment.



Card Shot (Multi) Function Scan up to four ID or credit cards at once, turn them over, and scan the reverse sides. For each card, a separate file is created that includes the front and reverse sides.



■ **Automatic Compression Rate** The MFP automatically selects the optimal compression rate by judging text size and resolution.

DESIGNED FOR PEOPLE

People want function, print quality, and—last but not least—ease of use in an MFP. Being able to use an MFP stress-free can boost work efficiency and also cut down on costs. Sharp’s pursuit of user-friendly product design and operability has resulted in MFPs that offer straightforward operation for anyone. Now’s the time to let a Sharp MFP make your office comfortable and stress-free.

7.0-Inch Full-Flat Touchscreen With a variety of functions accessible via simple, intuitive icons, MFP operation is smooth and easy. Customising the home screen has become easier than ever. The control panel can be tilted freely at various angles.

Information LED Next to the control panel is an LED lamp that lights up in three colours: blue, white, or orange. It notifies you—even from a distance—of the status of the MFP.



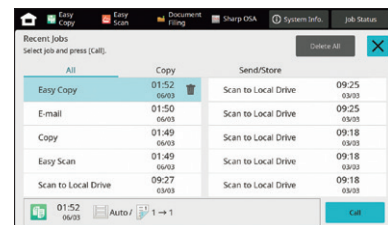
On-Screen System Information The control panel shows the state of your MFP, displaying current operation and notifications for things like paper, toner, and maintenance.

Print Release* The Print Release function lets you send documents to the main MFP, which acts as a server and stores them for printing out from any other compatible MFP on the network. This function comes in handy when the main MFP is in use or under maintenance, letting you finish your job with minimal waiting.

*Contact a Sharp customer representative for details on the recommended maximum number of connectable MFPs.

Online Manuals Easily access the latest manual for your MFP via the machine’s control panel. Using your mobile device, scan the QR Code on the control panel and read the manual on your device.

Recent Jobs The 10 most recent jobs—like copying, faxing, and scanning—can be called up on the LCD screen and their settings displayed. You can then change the settings as you like and repeat those jobs.



Direct Printing/Scanning with USB Drives Insert a USB drive into the MFP and a command screen will automatically pop up on the LCD. Right away you can print files from the USB drive—which are displayed as thumbnails—or you can scan documents directly to the USB drive.



ENVIRONMENTALLY FRIENDLY

An increasingly important part of running a business is mitigating environmental impact, such as by reducing energy costs and complying with environmental laws and regulations. Offices need to do whatever possible to lessen environmental impact. Sharp has a proven track record in designing environmentally friendly products. Now’s the time to let a Sharp MFP turn your office “green.”

Eco Recommendation This function suggests environmentally friendly settings before a print*/copy command is executed from the control panel.

*For printing Document Filing data and direct printing (FTP/SMB/USB)

Energy-Saving Mode The MFP has a low power consumption of only 0.5 W in network standby mode.

Eco Scan The Eco Scan function saves energy by keeping the fusing system shut down during jobs that don’t require its use—for example, during image sending and Document Filing.

PRODUCT LINEUP

BP-B547WD

A4 B/W MFP



BP-B537WR

A4 B/W MFP



Basic Specifications / Notable Functions

Functions available

Maximum engine speed*1 (ppm: pages per minute)	Maximum scan speed*1 (opm: originals per minute)	Size of LCD control panel	Maximum paper capacity (80 g/m ²)
Print resolution	Duplex single pass feeder	Reversing single pass feeder	Wireless LAN capability
Adobe PostScript 3	Optical character recognition	Prints common Microsoft Office files without using a PC*2	Converts scanned documents into compact PDF files
Sharp Open Systems Architecture	Enables connection to cloud services	Automatically feeds in and scans business cards via the document feeder	

*1: A4, short-edge feeding. *2: This function is enabled via Qualcomm® DirectOffice™ technology.

• Design and specifications are subject to change without prior notice.
 • Microsoft, Active Directory, Excel, Microsoft Teams, OneDrive, PowerPoint, and SharePoint are trademarks of the Microsoft group of companies. Box is a trademark, service mark, or registered trademark of Box, Inc. Dropbox is a trademark or registered trademark of Dropbox, Inc. Google Drive, Gmail, Android, Chrome OS, and Chromebook are trademarks of Google LLC. WPA3 and Wi-Fi Protected Setup are trademarks of Wi-Fi Alliance®. Wi-Fi Direct is a registered trademark of Wi-Fi Alliance®. QR Code is a registered trademark of DENSO WAVE INCORPORATED in Japan and other countries. AirPrint and Apple are trademarks of Apple Inc., registered in the US and other countries. Bitdefender is a trademark or registered trademark of Bitdefender SRL. Adobe and PostScript are either registered trademarks or trademarks of Adobe in the US and/or other countries. Qualcomm DirectOffice is a product of Qualcomm Technologies, Inc. and/or its subsidiaries. Qualcomm is a trademark of Qualcomm Incorporated, registered in the US and other countries. DirectOffice is a trademark of CSR Imaging US, LP, registered in the US and other countries. All other brand names and product names may be trademarks or registered trademarks of their respective owners.

Qualcomm® DirectOffice™

Distributed by:

SHARP